



## Public Open House

**Tuesday, November 13, 2018**

**4:00 p.m. - 6:00 p.m.**

(Stop by anytime - no formal presentation)

Liberty High School - Lobby\*  
2275 Sommers Road  
Lake Saint Louis, MO 63367

*\*This facility is ADA accessible.*

## Get Involved!

We need your feedback throughout this study. Tell us: your experiences when traveling on Route N from west of South Point Prairie Road to the I-64/Route 364 interchange; what potential environmental impacts we need to consider; and what you think of our proposed alternatives when we present them. Also, if you would like the study team to make a presentation to your organization and/or neighborhood group, please contact us.

**VISIT: [www.RouteNStudy.com](http://www.RouteNStudy.com)**

**CALL: 1-888-Ask-MoDOT**

## Route N Focus of Missouri Department of Transportation Study

The Missouri Department of Transportation's (MoDOT) St. Louis District, in cooperation with the Federal Highway Administration (FHWA), is conducting a National Environmental Policy Act (NEPA) Study being processed as an Environmental Assessment (EA) for an approximately eight-mile stretch of Route N in St. Charles County, Missouri.

The limits of the Route N Study (Study) extend from west of South Point Prairie Road east to the I-64/Route 364 interchange. The Study area is shown in the figure on the following page. The goal of this Study is to assess the needs and issues of this portion of Route N, as well as the impacts and overall effectiveness of potential alternatives to address those needs.

The Study started in August 2018 and is expected to be completed in early 2020. The St. Louis region's long-range transportation plan, Connected2045, identified Route N as a priority in the region for a study to explore the future of the corridor.

The Route N Study will develop alternatives and analyze them for their potential environmental impacts. These impacts include:

- Natural (noise, parks, wetlands, rivers/streams, and hazards);
- Cultural Resources; and
- Human (the effect on neighborhoods, communities and municipalities).

Once the impacts are identified, recommendations will be made for avoiding, minimizing or mitigating them.



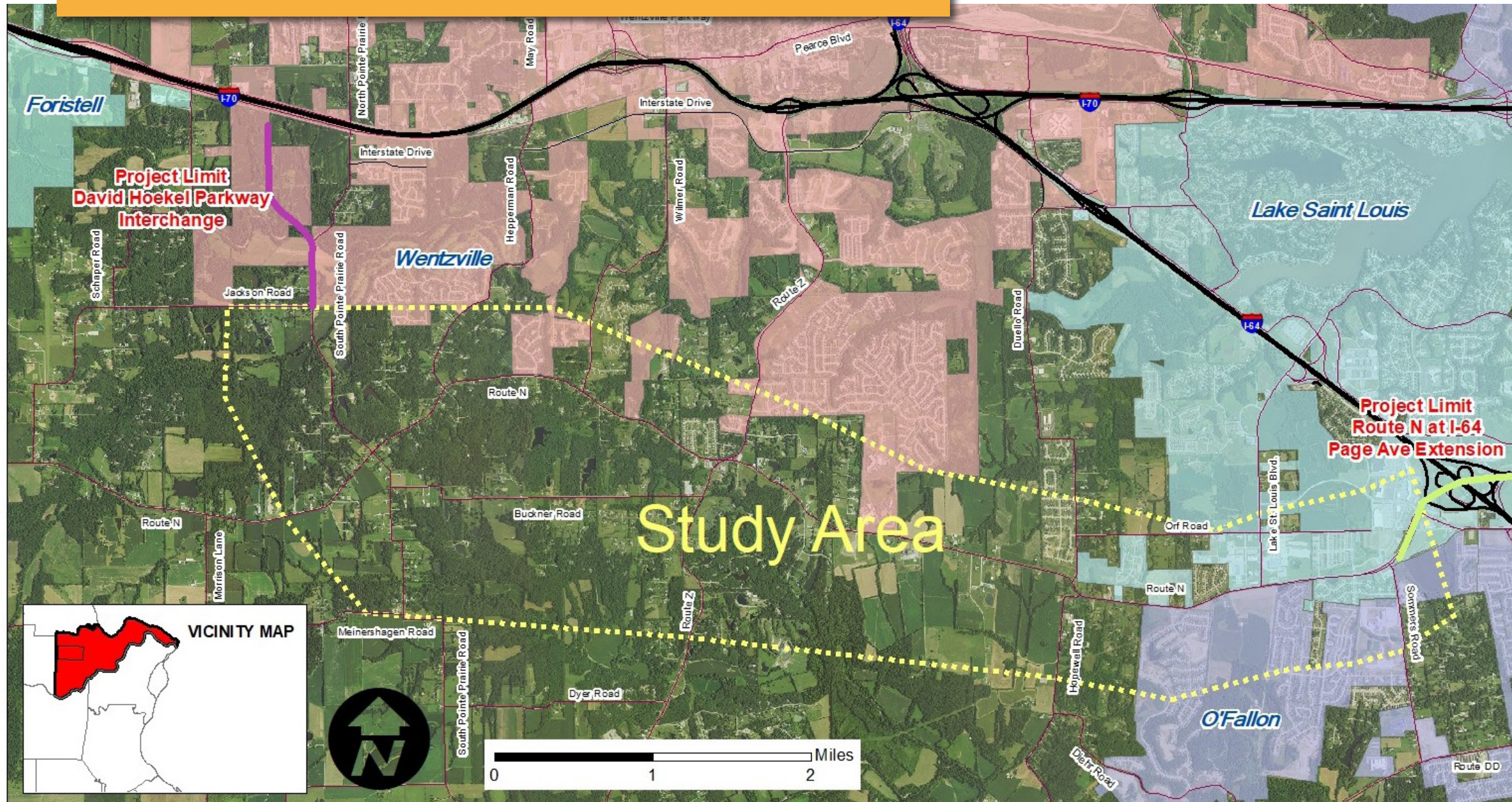
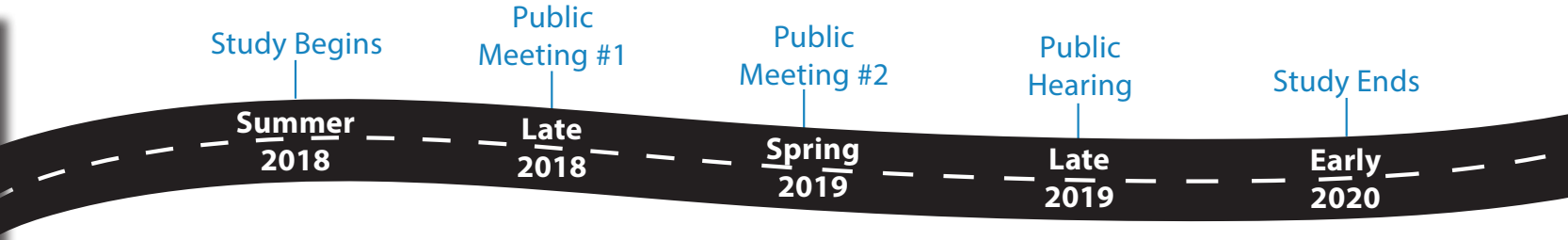
# Developing Requirements for the Route N Corridor

The environmental assessment for this project will identify a “preferred alternative” for improving this portion of Route N. Following that, the final design of the improvements will be determined by making sure they meet a thorough set of functional requirements (goals, constraints, needs, and desires) and performance requirements (engineering-oriented statements of what the facility or component must do). We value your input on the functional and performance requirements that would be appropriate for the Route N corridor.

# Study Timeline

The Route N Study is expected to be completed in early 2020. The study will conclude with FHWA reviewing the final environmental document. It will then issue either a Finding of No Significant Impact (FONSI) or require that the Missouri Department of Transportation (MoDOT) prepare an Environmental Impact Statement (EIS). An EIS is required when a proposed alternative is expected to have significant environmental impacts. When a FONSI is issued by FHWA and funding is secured in cooperation with the regional long-range transportation plan, then MoDOT can advance any potential projects to the design stage.

The limits of the Route N Study extend from west of South Point Prairie Road east to the I-64/Route 364 interchange in St. Charles County, Missouri.  
**The Study area is shown in the figure below.**





Explore. Engage. Improve.

MoDOT  
c/o Vector Communications  
401 S. 18th Street, Suite 325  
St. Louis, MO 63103

## Public Open House

**Tuesday, November 13, 2018**

*See inside for more details!*

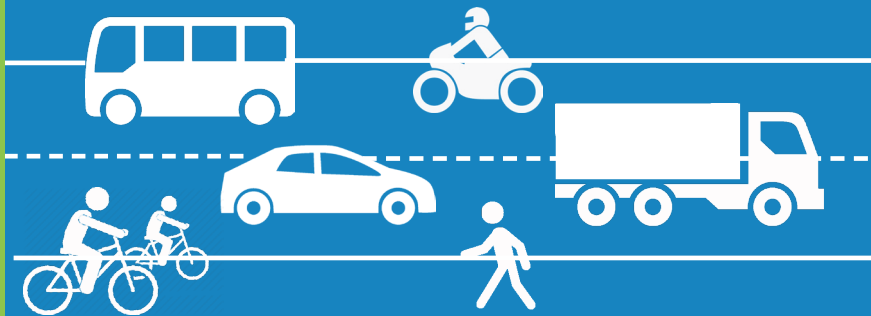
## Route N Study

The Missouri Department of Transportation's (MoDOT) St. Louis District, in cooperation with the Federal Highway Administration (FHWA), is conducting a Study to assess the issues and needs of the Route N corridor and determine the best approach to address them.



*See inside this newsletter for more details!*

Based on 2018 traffic counts, daily traffic on Route N ranges from fewer than 5,500 vehicles west of Route Z, to more than 18,000 vehicles west of US-40/I-64.



## Frequently Asked Questions

**Why is this study being conducted?** The function of Route N has changed in recent decades as western St. Charles County has developed. This study will assess the evolving function and issues affecting travel along the route.

**What is an Environmental Assessment?** An environmental assessment studies and documents the possible impacts a proposed transportation project may have on the natural and built environment. It is a requirement of the National Environmental Policy Act of 1969 (NEPA). NEPA ensures that decision makers consider the environmental, social and economic impacts when deciding whether or not to move forward with a project. Considering such impacts early in the planning process allows for them to be avoided, minimized or mitigated.

**Is there funding available for improvements?** This study is an important component in the regional public decision making process which evaluates funding transportation improvements for the St. Louis region. The environmental assessment is necessary to be eligible for partnering with the federal government for funding.